

## Emergency Contact Numbers

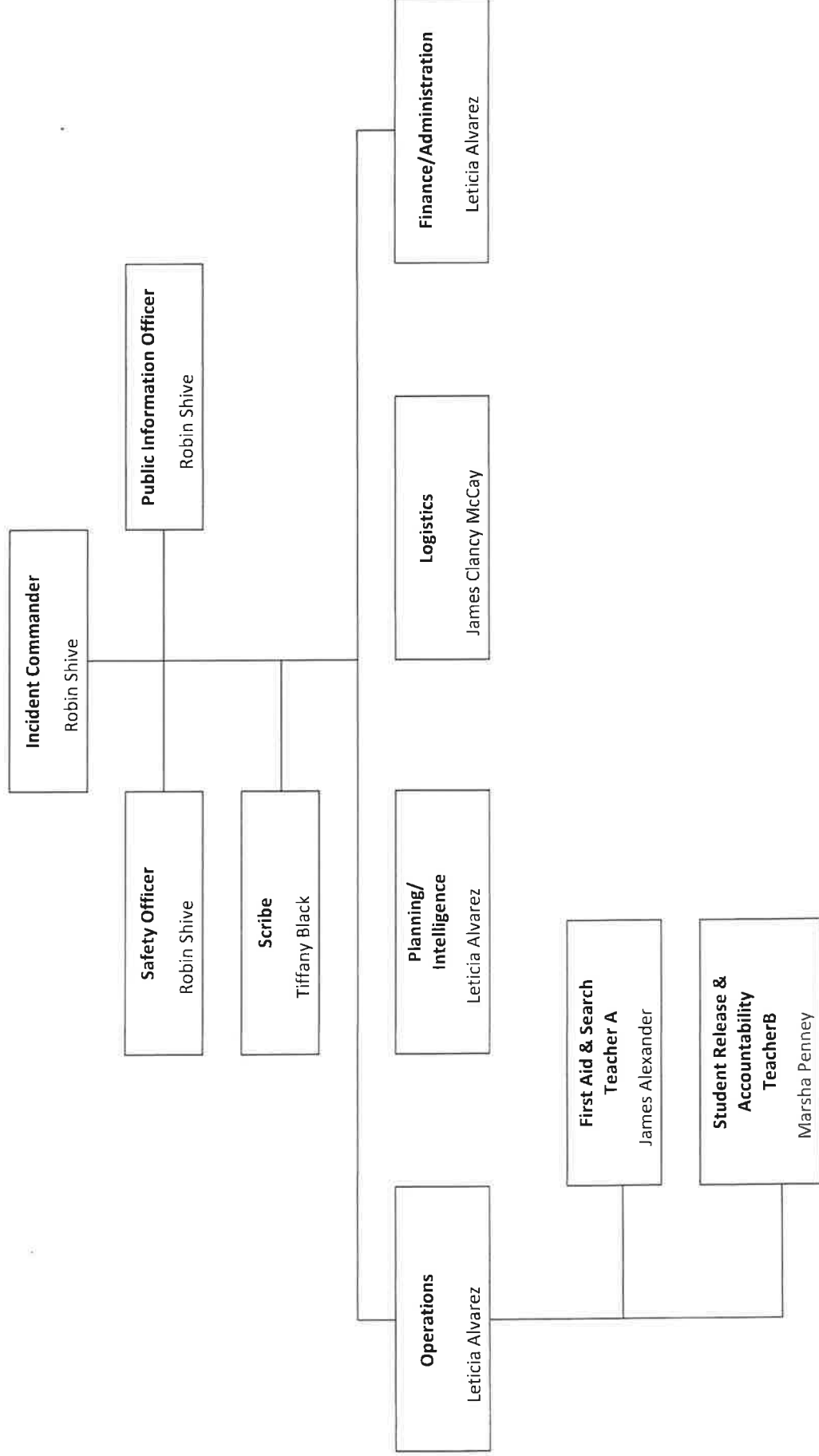
### Utilities, Responders and Communication Resources

Type	Vendor	Number	Comments
School District	Robin Shive	661-867-2301	
Law Enforcement/Fire/Paramedic	Fire	661-867-2311/911	
Public Utilities	Southern California Edison	1-800-990-7788	
Public Utilities	Waste Management	661-822-6871	
Emergency Services	Kern County Emergency Services	661-873-2603	
Law Enforcement/Fire/Paramedic	Kern County Sheriff	661-861-3110	

**Safety Plan Review, Evaluation and Amendment Procedures**

<b>Activity Description</b> (i.e. review steps, meetings conducted, approvals, etc)	<b>Date and Time</b>	<b>Attached Document</b> (description and location)
School Site Council	February 10, 2025 3:30 PM	Piute Mountain School
Caliente Union School Board	February 10, 2025 6:30 PM	Piute Mountain School

Piute Mountain Elementary School/Caliente Union School District Incident Command System



## **Incident Command Team Responsibilities**

### **Standardized Emergency Response Management System Overview**

The California Standardized Emergency Management System (SEMS) is designed to centralize and coordinate emergency response through the use of standardized terminology and processes. This greatly facilitates the flow of information and resources among the agencies participating in response to an emergency. SEMS consists of five functions:

Our small population of students and staff also requires that some Incident Command Team Responsibilities are duplicated by the same people.

### **Management**

During an emergency, the Incident Commander directs response actions from a designated Command Post. To effectively do this, the Incident Commander must constantly assess the situation, and develop and implement appropriate strategies. The Incident Commander must be familiar with the available resources, accurately document all response actions, and effectively communicate response strategies to others participating in the response. This function is typically filled by the school principal. The principal is assisted in carrying out this function by a Public Information & Liaison Officer and Safety Officer.

### **Planning & Intelligence**

Planning and Intelligence involves the use of various methods to efficiently gather information, weigh and document the information for significance, and actively assess the status of the emergency. This understanding and knowledge about the situation at hand is vital to the effective management of a response. These activities are performed by a single person who reports directly to the Incident Commander.

### **Operations**

All response actions are implemented under by Operations. This includes staff performing first aid, crisis intervention, search and rescue, site security, damage assessment, evacuations, and the release of students.

### **Logistics**

Logistics supports the response by coordinating personnel; assembling and deploying volunteers; providing supplies, equipment, and services; and facilitating communications among emergency responders.

### **Finance & Administration**

Finance & Administration involves the purchasing of all necessary materials, tracking financial records, timekeeping for emergency responders, and recovering school records following an emergency. These activities are performed by a single person who reports directly to the Incident Commander.

## **Emergency Response Guidelines**

### **Step One: Identify the Type of Emergency**

Identification of the emergency is determined by the Incident Commander.

### **Step Two: Identify the Level of Emergency**

Following the identification of the emergency, the incident commander will determine the level of emergency.

### **Step Three: Determine the Immediate Response Action**

The level of the emergency is identified. Following the determination, a response is identified according to our Safety Plan.

Regardless of the type of emergency that occurs, the initial response by staff and students will almost always include one or more of these four basic "INITIAL ACTIONS"

1. Duck and Cover
2. Evacuate Building
3. Shelter-In-Place
4. Lock-Down
5. Run-Hide-Fight (when an active shooter in vicinity)

### **Step Four: Communicate the Appropriate Response Action**

Appropriate actions and response procedures are communicated to staff and individuals using the Incident Command System Organizational Chart and following the safety plan.

Regardless of the type of emergency that occurs, the initial response by staff and students will almost always include one or more of these four basic "INITIAL ACTIONS"

1. Duck and Cover
2. Evacuate Building
3. Shelter-In-Place
4. Lock-Down
5. Run-Hide-Fight (when an active shooter in vicinity)

When there is a sudden loud noise, or other indication that something bad is happening, instinctively the first reaction should be to "Duck and Cover." Then once the situation becomes clearer, one of the other "Initial Actions" may be implemented. Although these five basic Initial Actions will suffice for the vast majority of campus emergencies, some emergencies may prompt the Incident Commander to follow these with additional emergency procedures. Examples of other potential actions include the total evacuation of staff and students to an off-site location, or the release of students to parents. When it is necessary to implement these other actions, the Incident Commander will provide direction in person or by other means as necessary.

## **Types of Emergencies & Specific Procedures**

### **Aircraft Crash**

call 911 and local fire 661-867-2311

### **Animal Disturbance**

Call Dept. of Fish and Wildlife 661-369-1615

### **Armed Assault on Campus**

Sheriff/ 911 and 661-861-3110

### **Biological or Chemical Release**

Call 911

### **Bomb Threat/ Threat Of violence**

Sheriff 911/ 661-861-3110

Fire Dept 661-867-2311

### **Bus Disaster**

CHP/911 and/or 661-864-4444

### **Disorderly Conduct**

Sheriff 911/661-861-3110

### **Earthquake**

911

Red Cross 661-324-6427/ Emergency Services 661-873-2602

### **Explosion or Risk Of Explosion**

Evacuate / call 911 and fire 661-867-2311

### **Fire in Surrounding Area**

911 / Local Fire Dept. 661-867-2311

Evacuate if needed

### **Fire on School Grounds**

Evacuate area, call 911 and Local Fire Dept. 661-867-2311

### **Flooding**

Local Fire Dept 661-867-2311

### **Loss or Failure Of Utilities**

We call parents and send them home

### **Motor Vehicle Crash**

call 911 and Local Fire Dept. 661-867-2311

### **Pandemic**

Follow CDPH guidelines

### **Psychological Trauma**

CCS College Community Services 760-379-3412

Comprehensive School Safety Plan

24 Hour Hotline 888-343-4756

**Suspected Contamination of Food or Water**

call Environmental Health Services for food contamination 661-862-8713

Water is well water

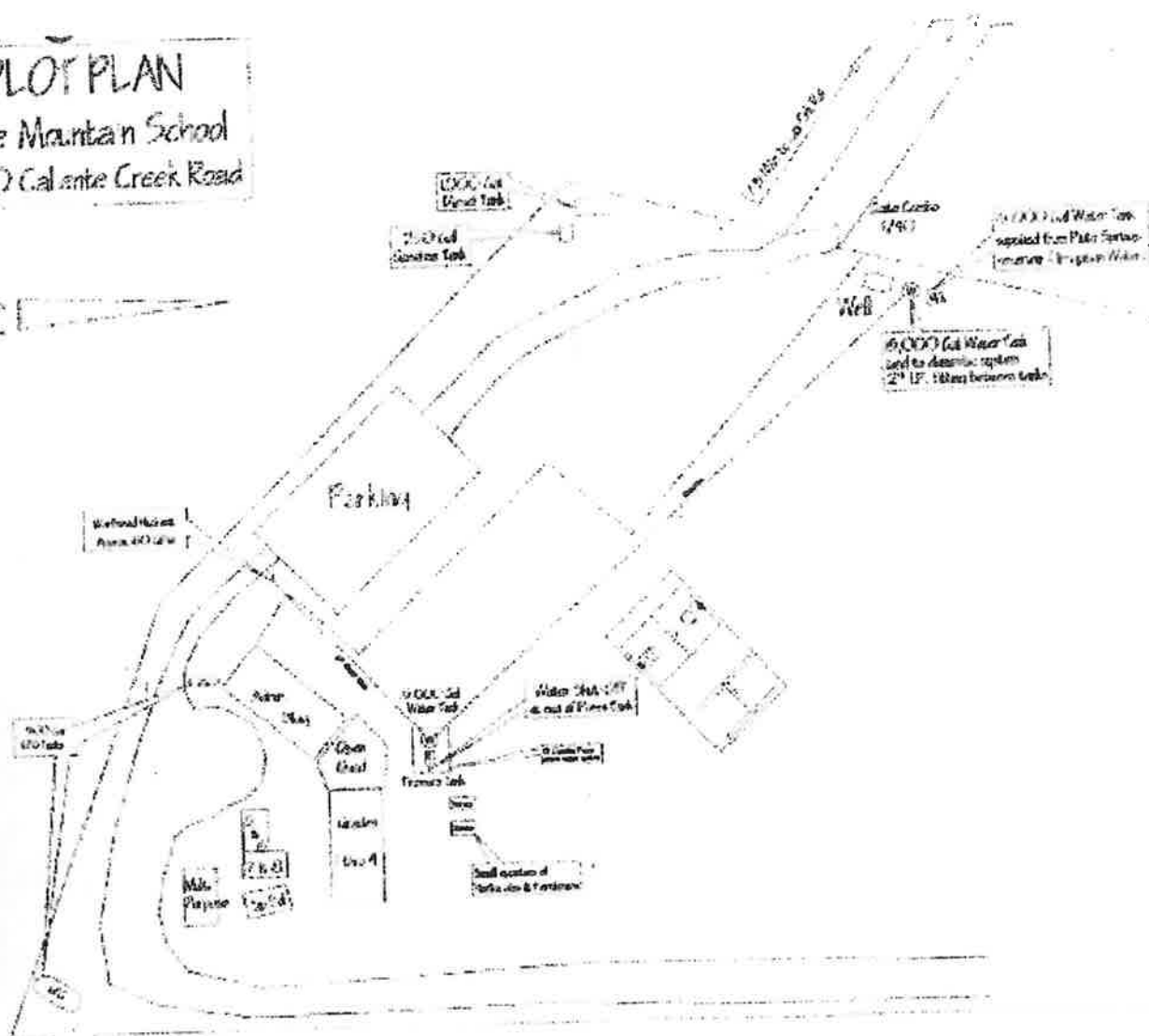
**Tactical Responses to Criminal Incidents**

Call Sheriff/ 911

**Unlawful Demonstration or Walkout**

Contact Kern County Superintendent of Schools Office (KCSOS) 1-661-636-4000

Pute Mountain School  
12400 Caliente Creek Road





## Emergency Evacuation Map